

FOR FUTURE USE AND REFERENCE
RETAIN THIS INSTRUCTION SHEET AND THE CRIB TOOLS IN THE ORIGINAL SACK
AND SECURE IT TO THE SPRING UNDER THE MATTRESS WITH PLASTIC TIES.

CARE INSTRUCTIONS: The natural warmth of wood is a lasting value. Character marks, checking and grain variations are part of the beauty of wood and, therefore, should not be a concern. If treated with care, this solid wood product will last you for many years to come. Once every week, wipe your Baby's Dream furniture with Pledge®, lemon oil or other similar wood treatment products. If you encounter any roughness in the finish of your new crib, fold a piece of regular white paper—not tissue or newspaper—and rub it gently against the surface until the desired smoothness is achieved. If refinishing, use a non-toxic finish specified for children's products. Let dry, sand with a very fine product such as folded paper or dish washing sponge and, finally, apply water-based baby-safe lacquer for the perfect matching shine.

WARNING! To insure your child's safety and for your own peace of mind, be sure to follow instructions properly. Failure to follow these warnings and assembly instructions could result in serious injury or death. Before each usage or assembly, inspect the crib for damaged hardware, loose joints, missing parts or sharp edges.

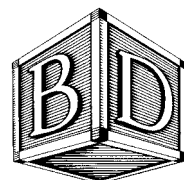
- ✓ **DO NOT** use the crib if any parts are missing or broken.
- ✓ **DO NOT** substitute parts. Ask your dealer or write to Baby's Dream Furniture for replacement parts and instructional literature if needed.
- ✓ Make sure that all bolts and screws are properly tightened. **DO NOT** over- or under-tighten.
- ✓ **AVOID STRANGULATION:** As soon as an infant can sit or stand up, close the crib gate or raise the Drop Front permanently.
- ✓ **DO NOT** place the crib near a window where cords from blinds or drapes may strangle a child.
- ✓ **DO NOT** tie pacifiers, necklaces or any other items around a child's neck or on the crib parts.

WARNING! Strings can cause strangulation! Do not place items with string around a child's neck, such as hood strings or pacifier cords. Do not suspend strings over a crib or attach string toys.

- ✓ **NEVER** use plastic shopping bags or other film as mattress covers, because they can cause suffocation.
- ✓ For a newborn, adjust the spring on the highest level of the Height Adjuster and open the gate or lower the Drop Front for easy access.
- ✓ **DO NOT** leave a child in a crib with an open gate or lowered Drop Front. Be sure the gate is closed or the Drop Front is raised and locked in position whenever the child is in the crib. After closing the gate or raising the Drop Front, make sure the latches are secure.
- ✓ The child must be seated at the rear of the crib when lowering or raising the gate or Drop Front.
- ✓ As your child grows, adjust the height of the spring down so that he/she cannot pull himself/herself out of the crib. When the child is able to pull to a standing position, set the mattress to the lowest position and remove bumper pads, large toys and other objects that could serve as steps for climbing out. When the child is able to climb out or reaches the height of 35" (90cm), the bed should no longer be used in the form of a crib. You can continue to use this crib as a youth or toddler bed for another 2 to 3 years by using the Youth Bed Conversion Kit.

ANY MATTRESS USED IN THIS CRIB MUST BE AT LEAST 27 1/4" X 51 5/8" WITH A THICKNESS NOT EXCEEDING 6". DO NOT USE A WATER MATTRESS WITH THIS CRIB.

This crib conforms to the applicable regulations promulgated by the Consumer Product Safety Commission.



This product may be covered by one or more of the following patents: D366,778; D366,970,5,077,846 and other patents pending.

BABY'S DREAM FURNITURE, INC.

Buena Vista, GA 31803-0579
 www.babysdream.com



"Generation Next™" Drop Side Crib Instruction Sheet

Read All Instructions Before Assembling Crib. Keep Instructions For Future Use.

A PHILLIPS HEAD SCREWDRIVER IS REQUIRED

PARTS LIST CRIB

- (1) Right Side Assembly
- (1) Left Side Assembly
- (1) Stationary Side
- (1) Drop Side
- (1) Brace

PARTS LIST DRAWER KIT

- (1) Drawer Face with Inside Front Attached
- (1) Inside Back
- (2) Inside Sides
- (1) Divider
- (2) Bottoms

YOUTH RAIL KIT WITH HARDWARE

- (Not Packaged with Crib)
- (1) Youth/Guard Rail
 - (4) Cam Studs
 - (4) Cam Locks

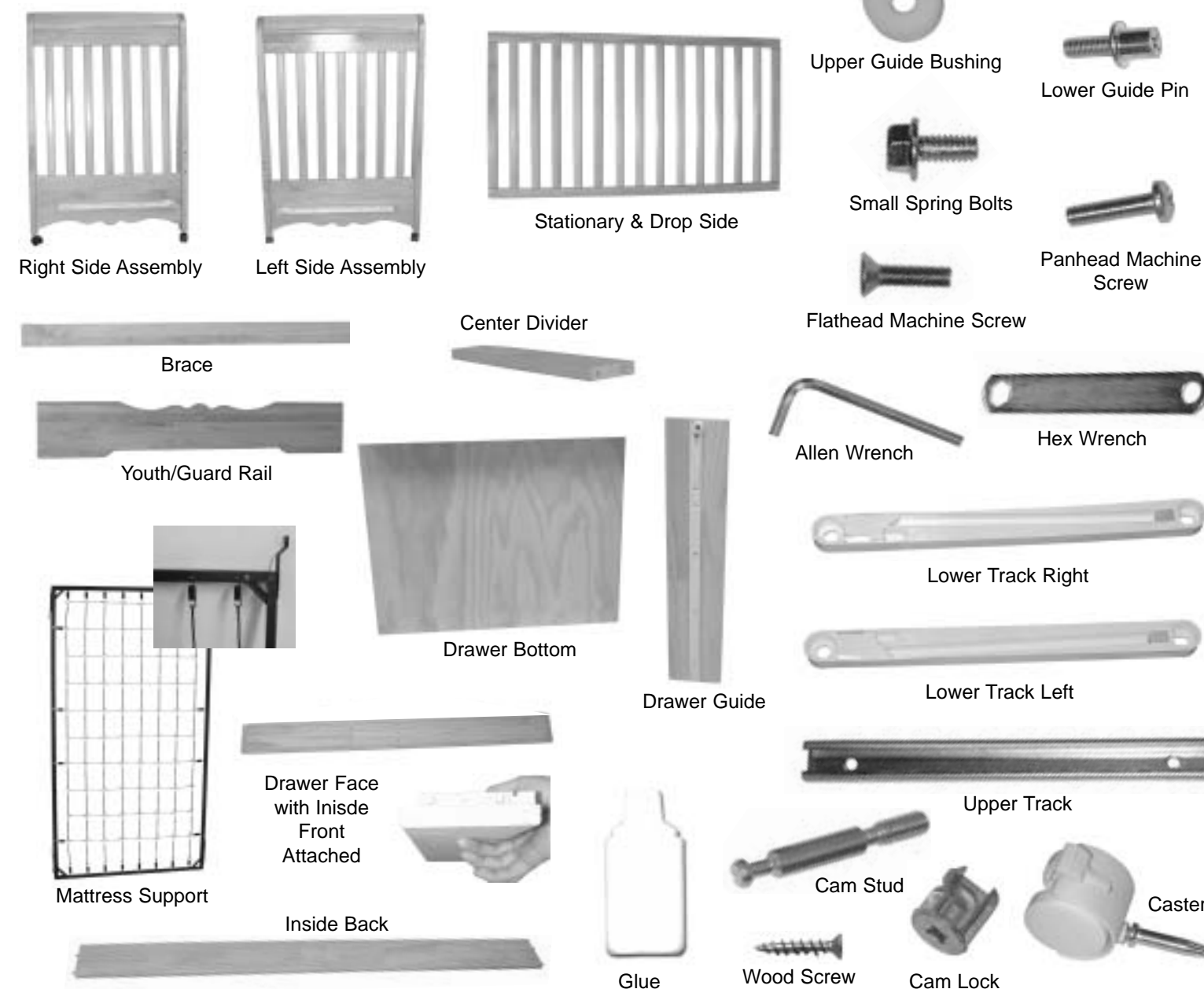
HARDWARE

- (1) Spring (Mattress Support)
- (2) Brace Brackets
- (4) Casters
- (4) 60mm Bolts
- (2) Lower Guide Pins
- (2) Upper Guide Bushings
- (2) Flathead Machine Screws
- (4) Panhead Machine Screws
- (4) Hex Bolts
- (1) Hex Wrench
- (1) Allen Wrench
- (1) 1 Set Drawer Guides (Mounted to Drawer Box and Side Frame)
- (2) Upper Tracks (Mounted to top Side Ends of Drop Side)

- (1) Lower Track Left (Mounted to lower edge of Drop Side on the left)
- (1) Lower Track Right (Mounted to lower edge of Drop Side on the right)
- (4) Wood Screws (to attach Brace Bracket)

HARDWARE - DRAWER

- (1) Glue Bottle
- (5) Wood Screws



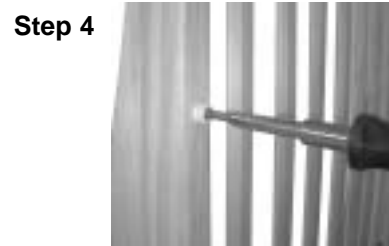
CRIB ASSEMBLY INSTRUCTIONS

Step 1: To begin assembly you will need the right or left Side Assembly, the Stationary Side, (2) 60mm Bolts and the Allen Wrench. to attach the Stationary Side to the Side Assembly you must insert the 60mm Bolts through the inside edge of the End Rails (of the Stationary Side), and into the inserts located in the posts. Tighten the bolts using the Allen Wrench. (See photo). Make sure that the pinned side of the Stationary Side faces to the back.

Step 2: Repeat Step 1 to attach the other Side Assembly.



Step 3



Step 4

Step 3: Next you must locate the Lower Guide Pins and screw them into the inserts in the bottom inside edge of the crib.

Step 4: You now need the (2) Flathead Machine Screws and the (2) Upper Guide Bushings. the Flathead Machine Screws will fit flush inside of the Upper Guide Bushings. Screw the Upper Guide Bushing with the screw into the insert in the upper edge of the post. Tighten using your screwdriver. (Do not over tighten the screw).



Step 5

Step 5: To attach the Drop Side you will need to follow the directions carefully. On the Drop Side you will see a sticker that will show you the top outside face. This sticker will be on the top rail facing outward towards you. Look at the edge of the Drop Side and you will see an Upper Track and a Lower Track. You will see an open area at the bottom of the Upper Track. This is where you must begin to attach the Drop Side. First you slide the open area of the Upper Track over the Upper Guide Bushings. Now slide the Drop Side down a few inches (this will help hold the Drop Side in place). Now you must slide the Lower Track (located on the Drop Side) over the Lower Guide Pin. You will need to push the bottom of the posts out far enough for the pin on the post to slide into the Lower Track. (Do this on both sides). Lift the Drop Side up until it locks in place.

Step 6: You must now lock the brace in place. (This will lock the whole crib together). First you must attach the (2) Brackets to the Brace (the Brace has pilot holes on the ends of the back side). Place the Brackets over the pilot holes and screw in place using the (4) Wood Screws provided. Now to attach the Brace to the crib you must use the (4) Panhead Machine Screws. Look at the bottom of the end assemblies and you will see metal inserts close to the front edge. Align the holes in the Brackets with the inserts and screw in place using the (4) Panhead Machine Screws. (See photo for mounting location).



Step 7

Step 7: Next you must mount the Spring or Mattress Support to the crib. (You may need help for this step). You will need your Spring, (4) Hex Bolts and the Hex Wrench. Swing the Spring Arms outward and insert a Hex Bolt through the hole in the Spring Arm and into the insert located in the post. Repeat this step for the other three locations. Tighten using the provided Hex Wrench. **(The two angled arms must be mounted to the front side of the crib).**



Step 8

Step 8: To lower the Drop Side you must lift the Drop Side up about 1" and use the side of your leg to push in the bottom rail. This will unlock the Drop Side.

To raise the Drop Side you must lift it up until it locks in place. (Make sure it is locked before leaving a child in the crib).



Step 1



Step 2



Step 6

Step 9: If you desire to install casters on your crib you must do the following steps: first you must lay the crib on its back on a carpeted floor (or) you can turn the crib upside down on a carpeted floor (with the posts facing upward). Next you must push the metal caster stem into the plastic bushing and snap in place.



Step 9



YOUTH BED "A" (From Scratch)

Youth Bed Conversion

(without Optional Youth Bed Conversion Kit)

Step 1: Complete Steps 1 and 2 of Crib Assembly Instructions.

Step 2: Complete Steps 6 and 7 of the Crib Assembly Instructions.



YOUTH BED "B" (From Crib)

Youth Bed Conversion

(without Optional Youth Bed Conversion Kit)

Step 1: Loosen Brace and remove Front Frame.

Step 2: Re-tighten Brace and remove Upper Guide Bushings and Lower Guide Pins.



YOUTH BED "C" (From Scratch)

Youth Bed Conversion (with Optional Youth Bed Kit)

Step 1: Complete Steps 1 and 2 of Crib Assembly Instructions.

Step 2: Screw the included Cam Studs into the holes located in the bottom section of the Front Posts.

Step 3: Attach the Youth Rail by sliding the Youth Rail over the Cam Studs on both posts (the shaped side of the youth Rail with the rosette. Must be facing upward.) Insert the Cam Locks into the holes and tighten using the Allen Wrench.

Step 4: Complete Steps 6 and 7 of the Crib Assembly Instructions. (The Spring must be mounted in the lowest position for this conversion).



YOUTH BED "D" (From Crib)

Youth Bed Conversion (with Optional Youth Bed Kit)

Step 1: Remove Brace and remove Front Frame.

Step 2: Remove Upper Guide Bushings and Lower Guide Pins.

Step 3: Complete Steps 2, 3 and 4 of Youth Bed "C" Instructions.

