

FOR FUTURE USE AND REFERENCE
RETAIN THIS INSTRUCTION SHEET AND THE CRIB TOOLS IN THE ORIGINAL SACK
AND SECURE IT TO THE SPRING UNDER THE MATTRESS WITH PLASTIC TIES.

CARE INSTRUCTIONS: The natural warmth of wood is a lasting value. Character marks, checking and grain variations are part of the beauty of wood and, therefore, should not be a concern. If treated with care, this solid wood product will last you for many years to come. Once every week, wipe your Baby's Dream furniture with Pledge®, lemon oil or other similar wood treatment products. If you encounter any roughness in the finish of your new crib, fold a piece of regular white paper—not tissue or newspaper—and rub it gently against the surface until the desired smoothness is achieved. If refinishing, use a non-toxic finish specified for children's products. Let dry, sand with a very fine product such as folded paper or dishing washing sponge and, finally, apply water-based baby-safe lacquer for the perfect matching shine.

WARNING! To insure your child's safety and for your own peace of mind, be sure to follow instructions properly. Failure to follow these warnings and assembly instructions could result in serious injury or death. Before each usage or assembly, inspect the crib for damaged hardware, loose joints, missing parts or sharp edges.

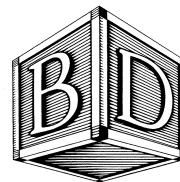
- ✓ **DO NOT** use the crib if any parts are missing or broken.
- ✓ **DO NOT** substitute parts. Ask your dealer or write to Baby's Dream Furniture for replacement parts and instructional literature if needed.
- ✓ Make sure that all bolts and screws are properly tightened. **DO NOT** over- or under-tighten.
- ✓ **AVOID STRANGULATION:** As soon as an infant can sit or stand up, close the crib gate or raise the Drop Front permanently.
- ✓ **DO NOT** place the crib near a window where cords from blinds or drapes may strangle a child.
- ✓ **DO NOT** tie pacifiers, necklaces or any other items around a child's neck or on the crib parts.

WARNING! Strings can cause strangulation! Do not place items with string around a child's neck, such as hood strings or pacifier cords. Do not suspend strings over a crib or attach string toys.

- ✓ **NEVER** use plastic shopping bags or other film as mattress covers, because they can cause suffocation.
- ✓ For a newborn, adjust the spring on the highest level of the Height Adjuster and open the gate or lower the Drop Front for easy access.
- ✓ **DO NOT** leave a child in a crib with an open gate or lowered Drop Front. Be sure the gate is closed or the Drop Front is raised and locked in position whenever the child is in the crib. After closing the gate or raising the Drop Front, make sure the latches are secure.
- ✓ The child must be seated at the rear of the crib when lowering or raising the gate or Drop Front.
- ✓ As your child grows, adjust the height of the spring down so that he/she cannot pull himself/herself out of the crib. When the child is able to pull to a standing position, set the mattress to the lowest position and remove bumper pads, large toys and other objects that could serve as steps for climbing out. When the child is able to climb out or reaches the height of 35" (90cm), the bed should no longer be used in the form of a crib. You can continue to use this crib as a youth or toddler bed for another 2 to 3 years by using the **Youth Bed Conversion Kit**.

ANY MATTRESS USED IN THIS CRIB MUST BE AT LEAST 27 1/4" X 51 5/8" WITH A THICKNESS NOT EXCEEDING 6". DO NOT USE A WATER MATTRESS WITH THIS CRIB.

This crib conforms to the applicable regulations promulgated by the Consumer Product Safety Commission.



This product may be covered by one or more of the following patents: D366,778; D366,970,5,077,846 and other patents pending.

BABY'S DREAM FURNITURE, INC.

Buena Vista, GA 31803-0579
 www.babysdream.com



Convertible "Crib 4 Life™" Instruction Sheet
 Read All Instructions Before Assembling Crib. Keep Instructions For Future Use.
 Check Box For All Parts.

PARTS LIST

BF)	1	Back Frame (largest)	GP)	4	1 1/4" Gate Pin
FF)	1	Front Frame (with Drop Gate)	TL)	2	Trigger Latch (attached to Drop Gate)
SF)	2	Side Frame	SP)	2	Strike Plates (attached to Front Corner Post)
FP)	2	Front Corner Posts (with Strike Plate)	HA)	4	Height Adjusters (attached to all Corner Posts)
RP)	2	Rear Corner Posts (without Strike Plate)	H)	3	Hinges (attaches Drop Gate to Front Frame)
MS)	1	Mattress Support (Spring)	YBK)	1	Youth Bed Kit (included)
DG)	1	Drop Gate (attached to Front Frame w/TG)	TBK)	1	Twin Bed Kit (not included with the Crib)
B80)	8	80 Millimeter Bolts	CL)	2	Cam Locks (included with Twin Bed Kit)
B60)	8	60 Millimeter Bolts	CS)	2	Cam Studs Bolt (included with Twin Bed Kit)
B1)	4	Small 1" Spring Bolts	ABR)	2	Adult Bed Rails (not included with the Crib)
AW)	1	Allen Wrench (included)	SH)	2	Short Posts (included with Adult Bed Rails)
HW)	1	Hex Wrench (included)	CD)	8	Cross Dowels (included with Adult Bed Rails)



BF) Back Frame



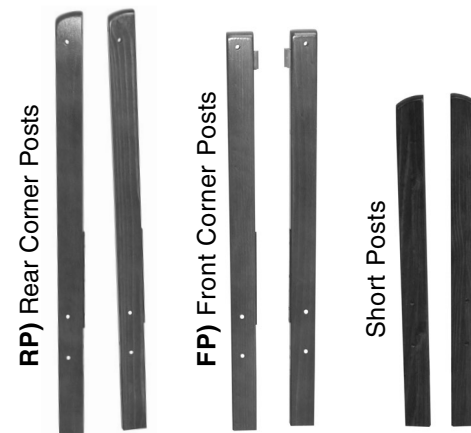
FF) Front Frame



SF) Side Frame



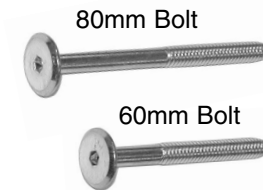
TL) Trigger Latch



RP) Rear Corner Posts

FP) Front Corner Posts

Short Posts



80mm Bolt

60mm Bolt



AW) Allen Wrench



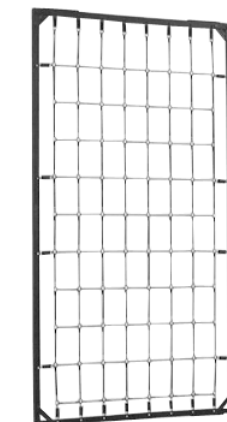
SP) Strike Plate



CD) Cross Dowel



CL) Cam Lock



MS) Mattress Support



B1) Small Spring Bolts



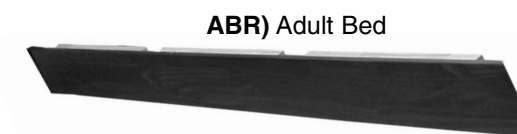
HW) Hex Wrench



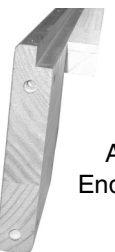
CS) Cam Stud Bolt



YBK) Youth Bed Kit



ABR) Adult Bed



ABR) Adult Bed End View



GP) 1 1/4 inch Gate Pin

CRIB ASSEMBLY INSTRUCTIONS

Do not tighten bolts until finished assembly.

Step 1 & 2



Step 1: Attach a Rear Corner Post (RP) to one end of one of the Side Frames (SF) with two 60mm Bolts (B60), and then attach the Front Corner Post (FP) to the other end of the same Side Frame (SF) with two other 60mm Bolts (B60), **DO NOT** over tighten the bolts.

Step 2: Repeat Step 1 for the other side of the crib; i.e. - With two 60mm Bolts (B60) attach the other Rear (RP) and Front Corner Posts (FP) to the other Side Frame (SF).

Step 3 & 4



Step 3: Place the Back Frame (BF) on the floor with the design facing up. Place one of the above Side Frames (SF) perpendicular to the Back Frame (BF) and tighten with two 80mm Bolts (B80).

Step 4: Repeat Step 2 for the other side of the crib; i.e. - Place the other Side Frame (SF) perpendicular to the other side of the Back Frame (BF) (as it lays on the floor) and tighten it with two 80mm Bolts (B80).

Step 5: Stand the three sided crib up right by holding and raising the Back Frame (BF).

Step 6: Place the Mattress Support Spring (MS) on the floor inside the crib. Insert and turn, but do not tighten, two Small Bolts (B1) into the proper position on the Height Adjusters (HA) of the Rear Corner Post (RP). Attach the front of the Spring (MS) to the Height Adjusters (HA) on Front Corner Posts (FP) with two Small Spring Bolts (B1), and then tighten all small spring bolts.

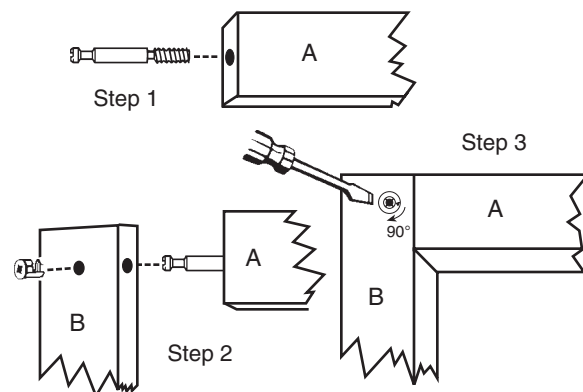


Step 7

Step 7: Attach the Front Frame (FF) to the rest of the crib at Front Corner Posts (FP) with four 80mm Bolts (B80). Before fully tightening bolts, let the Front Frame (FF) drop to the bottom of the holes. Make sure posts do not stick above the frames. Now is the time to tighten all bolts. Close gate and make sure that the Trigger Latches (TL) and the Strike Plates (SP) lock together correctly.

HOW TO ATTACH TWO PARTS WITH THE CAM AND STUD MECHANISM:

- (1) First turn the Cam Stud Bolt (CS) into the METAL INSERT of **Part A** and tighten firmly with a flat head screwdriver.
- (2) Then insert the round end of the Cam Stud Bolt (CS) (as it is attached to the first piece) into the hole at the edge of **Part B**.
- (3) Place the Cam Lock (CL) on the tip of a Phillips head screwdriver and insert it into the hole on the face of **Part B**. Make sure that the triangular pointer on the Cam Lock (CL) points towards the Cam Stud Bolt (CS) for easy fit.
- (4) Once the Cam Stud Bolt (CS) is fitted snugly inside the Cam Lock (CL), turn it 90° clockwise with the Phillips head screwdriver to lock.



Once a crib has been converted to a youth bed or adult bed it is not intended to be converted back to a crib.

YOUTH BED INSTRUCTIONS

STARTING FROM CRIB:

- Step 1:** Remove the Front Frame (FF) and leave the Front Corner Posts (FP) on the bed.
- Step 2:** Make sure that the Spring (MS) is at the lowest level of the Height Adjuster (HA).
- Step 3:** Attach the Youth Bed Kit (YBK) to the Front Corner Posts (FP) with two 80mm Bolts (B80).
- Step 4:** Remove the Strike Plates (SP) from the Front Corner Posts (FP).



Youth Bed

STARTING FROM SCRATCH:

- Step 1:** Follow steps 1 through 6 of the Crib assembly instructions.
- Step 2:** Follow steps 2 through 4 of the above Youth Bed assembly instructions.

YOUTH BED GUARD RAIL INSTRUCTIONS

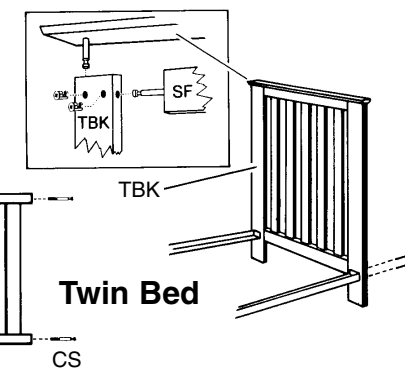
- Step 1:** Use the above instructions to convert your Crib 4 Life™ into a Youth Bed.
- Step 2:** Unscrew the 3 hinges on the Front Frame (FF) and detach the Drop Gate (DG) from Front Frame (FF).
- Step 3:** Detach the 2 Trigger Latches (TL) from both ends of the Drop Gate (DG).
- Step 4:** Hammer in the Gate Pins (GP) 3/4 inches into the pilot holes on the two ends of the Drop Gate (DG).
- Step 5:** Loosen the two 80mm Bolts (B80) that had secured the Youth Bed Kit (YBK) to the Front Corner Posts.
- Step 6:** Insert the 4 Gate Pins (GP) into the top and third hole of the Height Adjuster (HA). In order to hold the Drop Gate (DG) suspended an inch above the Youth Bed Kit (YBK) to the Front Corner Posts (FP) by tightening the two 80mm Bolts (B80).

Youth Bed Guard Rail



TWIN BED ASSEMBLY INSTRUCTIONS

- Step 1:** Screw in 4 Cam Stud Bolts (CS) into the 4 insert at the 4 ends of the Side Frame (SF).
- Step 2:** Attach the 2 sides of the Twin Bed Kit (TBK) to the Side Frame (SF) by dropping the Cam Lock (CL) into the hole at the back of the Twin Bed Kit (TBK).
- Step 3:** Bolt in the top part (cap rail) of the Twin Bed Kit (TBK) into the twin bed head board with two 2 Cam Stud Bolts (CS) and 2 Cam Locks (CL). Refer to blown up diagram.
- Step 4:** Bolt in a set of Hollywood Metal Twin Bed Rails (rails with rollers) to the Bottom holes of the Twin Bed Kits.



Twin Bed

FULL SIZE BED ASSEMBLY INSTRUCTIONS

- Adult Bed**
- Step 1:** Remove the Drop Gate (DG) from the Front Frame (FF) by unscrewing the 3 Hinges (H).
- Step 2:** Remove the two Strike Plates (SP) from the Front Corner Posts (FP).
- Step 3:** Remove all 4 Height Adjusters (HA) from all four Corner Posts.
- Step 4:** Place the Back Frame (BF) on the floor and connect 2 corner posts to each side with two 80mm Bolts (B80).
- Step 5:** Place the Front Frame (FF) on the floor and connect two short posts to each end; if you are using Baby's Dream solid wood Adult Bed Rails (ABR). If you are using Universal Metal Rails you must attach the Front Corner Posts (FP) to the Front Frame (FF) to make the footboard. Remove all hardware from the Front Posts (FP) if you are using the Front Posts.
- Step 6:** Connect the Headboard and the footboard together using either Universal Metal Rails or BDF's Wooden Adult Bed Rails. The metal rails are packaged with all needed hardware for attachment. To attach the wooden bed rails you will need the eight 60mm Bolts and eight Cross Dowels provided. Make sure that the wooden bed cleats are on the upper side of the bed rail.

