

## FOR FUTURE USE AND REFERENCE

RETAIN THIS INSTRUCTION SHEET AND THE CRIB TOOLS IN THE ORIGINAL SACK AND SECURE IT TO THE SPRING UNDER THE MATTRESS WITH PLASTIC TIES.

CARE INSTRUCTIONS: The natural warmth of wood is a lasting value. Character marks, checking and grain variations are part of the beauty of wood and, therefore, should not be a concern. To preserve your furniture, we suggest the following:

- Do not expose furniture to direct sunlight or extreme changes in temperature or moisture.
- Do not place the furniture near heating or air conditioning vents.
- Wipe up spills promptly.
- When cleaning your furniture, use non-toxic, non-abrasive furniture cleaner with soft, lint-free cloth. Dry thoroughly and then apply furniture polish. Always wipe the furniture in the direction of the wood grain.
- If refinishing, use non-toxic finish specified for children's products.

We recommend the furniture to be polished every six months. Over polishing can distort the natural finish of the product.

- WARNING!**
- ✓ Infants can suffocate on SOFT BEDDING! Never add a pillow, comforters or padding! Never place additional padding under infant.
  - ✓ To reduce the risk of sids, pediatricians recommend healthy infants be placed on their backs to sleep, unless otherwise advised by your physician.
  - ✓ To help prevent strangulation tighten all fasteners. A child can trap parts of the body or clothing on loose fasteners.

- WARNING!** To insure your child's safety and for your own peace of mind, be sure to follow instructions properly. Failure to follow these warnings and assembly instructions could result in serious injury or death. Before each usage or assembly, inspect the crib for damaged hardware, loose joints, missing parts or sharp edges.
- ✓ DO NOT use the crib if any parts are missing or broken.
  - ✓ DO NOT substitute parts. Visit Parts Request at [www.babysdream.com](http://www.babysdream.com) for replacement parts and instructional literature if needed.
  - ✓ Make sure that all bolts and screws are properly tightened. DO NOT over- or under-tighten.
  - ✓ AVOID STRANGULATION: As soon as an infant can sit or stand up, close the crib gate or raise the Drop Side permanently.
  - ✓ DO NOT place the crib near a window where cords from blinds or drapes may strangle a child.
  - ✓ DO NOT tie pacifiers, necklaces or any other items around a child's neck or on the crib parts.

- WARNING!** Strings can cause strangulation! Do not place items with string around a child's neck, such as hood strings or pacifier cords. Do not suspend strings over a crib or attach string toys.
- ✓ NEVER use plastic shopping bags or other film as mattress covers, because they can cause suffocation.
  - ✓ DO NOT leave a child in a crib with an open gate or lowered Drop Side. Be sure the gate is closed or the Drop Side is raised and locked in position whenever the child is in the crib. After closing the gate or raising the Drop Side, make sure the latches are secure.
  - ✓ The child must be seated at the rear of the crib when lowering or raising the gate or Drop Side.
  - ✓ For a newborn, adjust the spring on the highest level of the Height Adjuster and open the gate or lower the Drop Side for easy access.
  - ✓ As your child grows, adjust the height of the spring down so that he/she cannot pull himself/herself out of the crib. When the child is able to pull to a standing position, set the mattress to the lowest position and remove bumper pads, large toys and other objects that could serve as steps for climbing out. When the child is able to climb out or reaches the height of 35" (90cm), the bed should no longer be used in the form of a crib.
  - ✓ The time that you convert will depend on each child's individual comfort level, maturity, and size. In most instances, with proper adult supervision: Crib 0-2 years of age or when child is 35" or more in height, Youth Bed 2-5 years of age, Adult Bed 6 years and older.

**ANY MATTRESS USED IN THIS CRIB MUST BE AT LEAST 27 1/4" X 51 5/8" WITH A THICKNESS NOT EXCEEDING 6". INFANTS CAN SUFFOCATE IN GAPS BETWEEN CRIB SIDES AND MATTRESSES THAT ARE TOO SMALL.**

This product may be covered by one or more of the following patents:  
D366,778; D366,970,5,077,846  
and other patents pending.

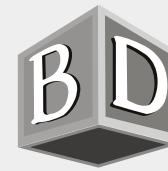


This crib conforms to the applicable regulations promulgated by the Consumer Product Safety Commission, as well as safety certifications by JPMA.



**BABY'S DREAM™**  
FURNITURE, INC.

Buena Vista, GA 31803-0579  
[www.babysdream.com](http://www.babysdream.com)



# Enchanted Stationary Crib Instruction Sheet

Read All Instructions Before Assembling Crib. Keep Instructions For Future Use.

### PARTS LIST

- (1) Front Frame Assembly
- (1) Back Frame
- (1) Right Side Frame
- (1) Left Side Frame
- (1) Guard Rail
- (2) Youth Post Caps

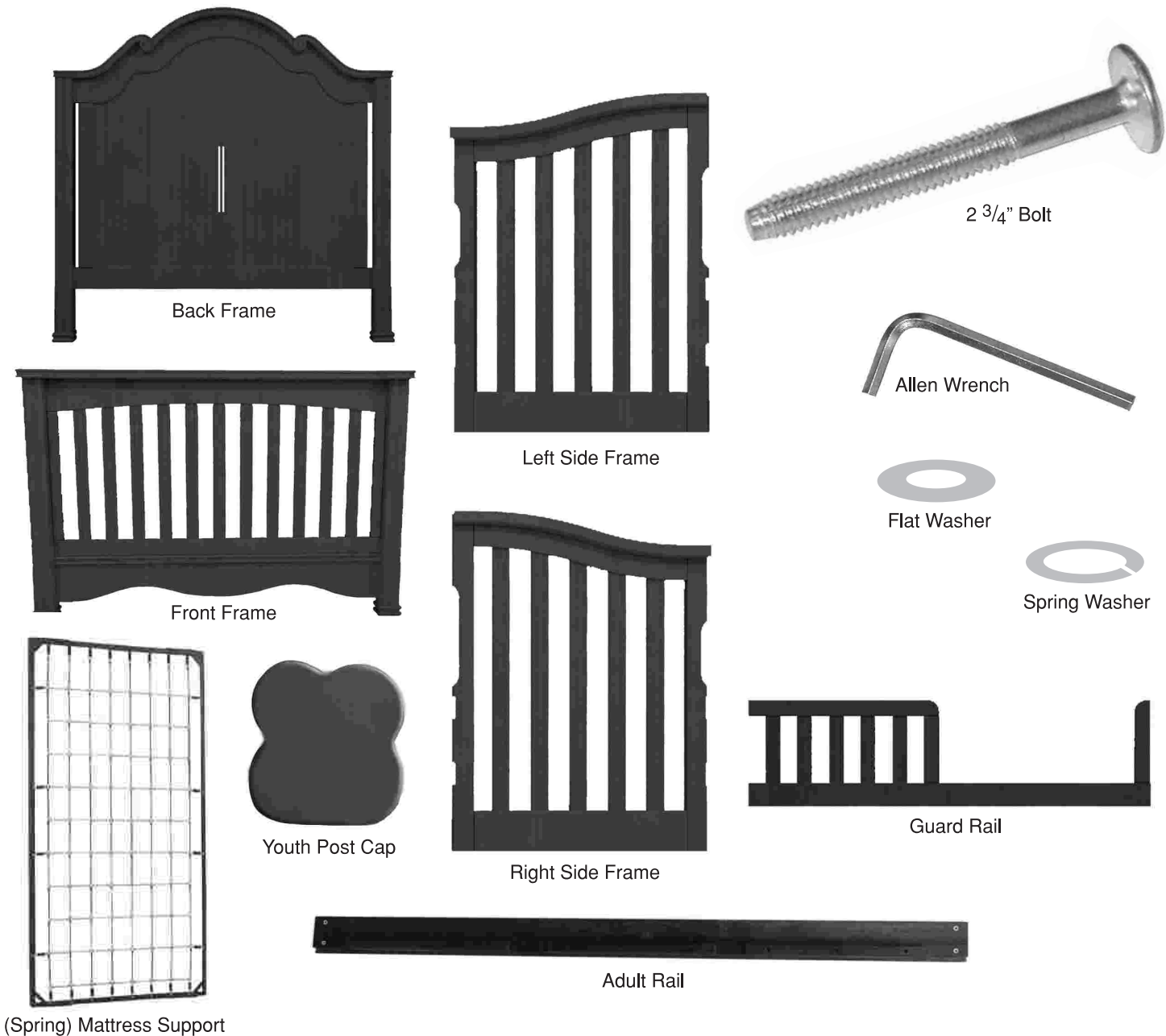
### HARDWARE LIST

- (12) 2 3/4" Bolts
- (1) Allen Wrench
- (16) Flat Washers
- (16) Spring Washers
- (1) Mattress Support (Spring)

### ITEMS INCLUDED WITH ADULT BED CONVERSION (sold separately)

- (1) Set of Universal Adult Rails
- (5) Cross Slats
- (10) 1" Wood Screws
- (8) 3/4" Bolts

Model \_\_\_\_\_ MFG. Date \_\_\_\_\_ P.O. # \_\_\_\_\_



DO NOT substitute parts. Contact 1-800-TEL-CRIB for replacement parts and instructional literature if needed.

## CRIB ASSEMBLY INSTRUCTIONS

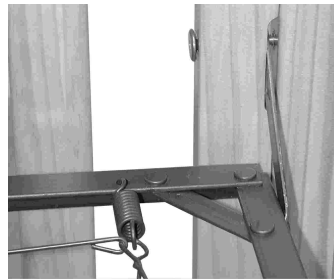
\*\*\*\* Note, Recommend 2 people for Assembly \*\*\*\*

**Step 1:** To begin you will need the Right and Left Side Frames (you can identify these by the labeling posted on the inside of each side frame), four 2 3/4" bolts and the Back Frame Assembly. You will attach the Right Side Frame to the Back Frame Assembly using two 2 3/4" bolts by sliding the bolts thru the top and bottom pre-drilled holes on the Right Side Frame into the inserts in the Corner Posts of the Back Frame. Now using your Allen Wrench tighten all the bolts at this time. \*\*\*Repeat the steps for the Left Side Frame.



**Step 2:** Next you will need to attach the Front Frame. For this step you will need the Front Frame Assembly and four 2 3/4" bolts. You will attach the Front Frame to the Right Side Frame Using two 2 3/4" bolts. Slide the bolts thru the top and bottom pre-drilled holes on the Right Side Frame into the inserts in the Corner Posts of the Front Frame Assembly. Now using your Allen Wrench tighten all the bolts at this time. \*\*\*Repeat the steps for the Left Side Frame.

**Step 3:** In this step you will attach the Mattress Support by using the remaining four 2 3/4" bolts and the Allen Wrench. Swing the support arms out on the Mattress Support and slide them into the cut out areas between the Left & Right Side Frames and the Posts on the Front and Back Frame Assemblies when the desired height of the Mattress Support is determined. Then you will slide the bolts thru the cut-out hole on the Left & Right Side Frames; Make sure the bolt also goes thru the support arms on the Spring Support and then tighten the bolts into the corner posts of the Front and Back Assemblies. Tighten all the four Bolts at this time. \*\*Note in the photo how arms are positioned and the arms of the spring support are pointing up.



## YOUTH BED CONVERSION

**Step 1:** You will need to remove the Front Frame – Middle Panel from the front Corner Post's. Each Side of the Middle Panel has four 2 3/4" bolts that attach it to the front Corner Post's. You will need to use your Allen Wrench and remove the four bolts from the Middle Panel, two on each side. Once you remove the four bolts you will need to lift up on the Middle Panel of the Front Frame and remove it from in-between the two Front Corner Post's.

**Step 2:** You will need to attach the Guard Rail using the four 2 3/4" bolts. Slide the Guard Rail down between the two front Corner Post's. There are three holes in the bottom of the Guard Rail. You will line these holes up with the wooden dowels that are in the bottom rail between the front Corner Post's. Now push the Guard Rail down onto the wooden dowels until snug with the bottom rail.

**Step 3:** Next take your four 2 3/4" bolts and screw them through the sides of the Guard Rail into the front Corner Post's. \*\*Make sure that the Mattress Support is in the Lowest Level\*\*



Once a crib has been converted to a toddler/youth bed or adult bed it is not intended to be converted back to a crib. In that instance, it will not be covered by the manufacturer's warranty.

## ADULT BED CONVERSION

Conversion from crib using Adult Conversion Kit by Baby's Dream (sold separately).



**Step 1:** Remove the Guard Rail by removing the four 2 3/4" bolts with the allen wrench.

**Step 2:** Replace the front Middle Panel. Slide the front Middle Panel between the front Corner Post's. Make sure to line up the holes in the bottom with the wooden dowels in the bottom rail. Now push the front Middle Panel down on the wooden dowels until snug with the bottom rail. Next take your four 2 3/4" bolts and screw them through the side of the front Middle Panel into the front Corner Post's.

**Step 3:** Now remove the Mattress Support and Side Frames from the Front Frame and Back Frame. Now you have your Headboard and Footboard of the Adult Bed. \*\* Please note that you will need to use the back side of the Back Frame for your Headboard.\*\*

**Step 4:** To attach the wood side rails (packaged in the Adult Conversion Kit) to the Headboard and footboard you will need eight 3/4" bolts, eight spring washers, eight flat washers and your allen wrench. Insert the 3/4" bolt with spring washer and flat washer through the holes in the metal brackets and into the post of the headboard and footboard. Tighten all bolts using your allen wrench.

**Step 5:** Attach the five cross slats to the wood side rails, you will need ten 1" screws and your Phillips Head screwdriver. Now your adult bed assembly is complete.

The Adult Bed IS NOT intended to be used by children under 6 years of age without proper adult supervision. This Adult Bed is NOT a toy. DO NOT allow children to play or climb on Adult Bed.