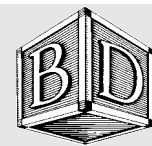


TO HELP PREVENT SERIOUS OR FATAL INJURIES FROM ENTRAPMENT OR FALLS
PLEASE READ ALL WARNINGS AND INFORMATION CAREFULLY.



Infinity Bunk Bed Instruction Sheet

Read All Instructions Before Assembling Bed. Keep Instructions For Future Use.

WARNINGS & INFORMATION PLEASE READ!

KEEP THESE INSTRUCTIONS FOR FUTURE REFERENCE

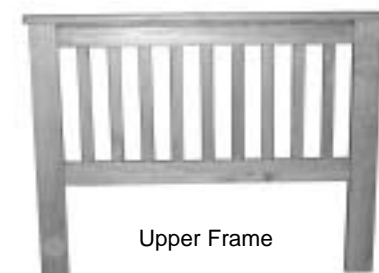
- ✓ Use only a mattress which is 74" to 75" long and 37 $\frac{1}{2}$ " to 38 $\frac{1}{2}$ " wide on the upper bunk. Use a bunkie board and a mattress or a mattress with a built in bunkie board. Ensure thickness of mattress and foundation combined does not exceed 6" and mattress is at least 5" below upper edge of guard rails.
- ✓ **DO NOT** allow children under 6 years of age to use the upper bunk.
- ✓ Use guard rails on both sides of the upper bunk.
- ✓ Prohibit horseplay on or under bed.
- ✓ Prohibit more than one person on upper bunk.
- ✓ Use ladder for entering or leaving upper bunk.
- ✓ If the bunk bed will be placed next to a wall, the guard rail that runs the full length of the bed should be placed against the wall to prevent entrapment between the bed and the wall.
- ✓ Replacement parts, including additional guard rails, may be obtained from any Baby's Dream Furniture dealer. **Do not** substitute parts.
- ✓ Follow the information on the warning labels that appear on the upper bunk end structure and on the carton. **Do not** remove label from bed.
- ✓ Always use the recommended size mattress or mattress support, or both, to help prevent the likelihood of entrapment or falls.
- ✓ Surface of mattress must be at least 5" below the upper edge of the guard rails.
- ✓ **Do not** allow children under 6 years of age to use the upper bunk.
- ✓ Periodically check and ensure that the guard rails, ladder, and other components are in their proper position, free from damage, and that all connectors are tight.
- ✓ Use of a nightlight may provide added safety precautions for a child using the upper bunk.
- ✓ The use of water or sleep floatation mattress is prohibited.

PARTS LIST

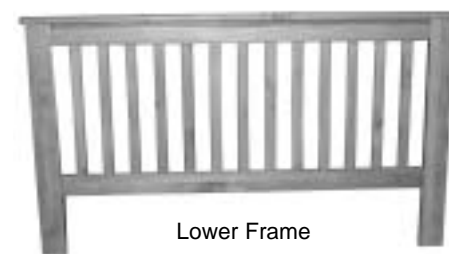
Qty Box	# Items in Box	Description of Items
1	2 per Box	Upper Frames (Narrow Frames)
1	2 per Box	Lower Frames (Wide Frames)
1	4 per Box	Bed Rails (2 Bottom & 2 Top) packaged with Bed Slats
	10 per Box	Bed Slats packaged with Bed Rails
1	1 per Box	Ladder
	2 per Box	Guard Rails (1 Long 1 Short)

HARDWARE LIST

Qty	Item	Description of Use
16	80mm Bolts	These bolts are used to bolt the frames to the bed rails
16	Cross Dowels	To be inserted into the holes in the bed rails
2	Upper Ladder Hooks	Will attach to the top of the ladder (in pre-drilled hole)
2	Lower Ladder Brackets	To be attached to the bottom of the ladder after assembly
20	1" Screws for Bed Slats	Used to screw down bed
8	#8 x 1 $\frac{1}{4}$ Wood Screws	To attach ladder hooks and brackets to ladder
4	Stacking Pins	To stack the two bed assemblies together
10	Joint Connector Nut	Used to attach the guard rail
10	Joint Connector Bolt	Used to attach the guard rail (Used with the joint connector nut)
1	4mm Allen Wrench	To use with bolts to assemble frames to bed rails
1	5mm Allen Wrench	to use with joint connector bolts



Upper Frame



Lower Frame



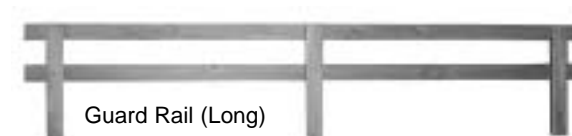
Bed Slats



Ladder



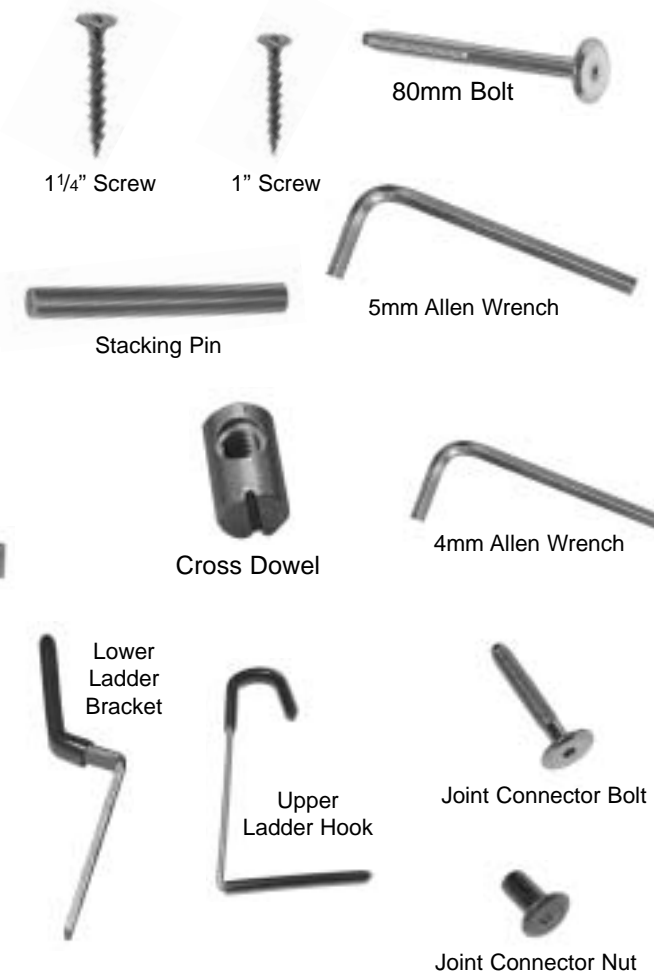
Bed Rail



Guard Rail (Long)



Guard Rail (Short)



1 $\frac{1}{4}$ " Screw

1" Screw

80mm Bolt

Stacking Pin

5mm Allen Wrench

Cross Dowel

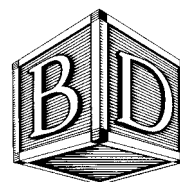
4mm Allen Wrench

Lower Ladder Bracket

Upper Ladder Hook

Joint Connector Bolt

Joint Connector Nut



BABY'S DREAM
FURNITURE, INC.

Buena Vista, GA 31803-0579
www.babysdream.com



INFINITY BUNK BED ASSEMBLY INSTRUCTIONS

READ ALL WARNINGS AND INFORMATION BEFORE ASSEMBLY!

Step 1: Remove the bed rails from the top and bottom bed rail assembly box. On the face side of the rails you will see that two of the four rails have holes in them. The two rails with holes must be used on the upper unit. The upper unit consists of the two upper frames (narrow) and the two bed rails with holes.



Step 1

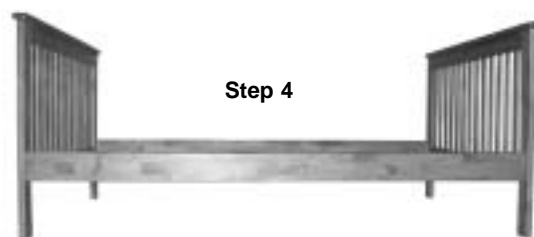


Step 2

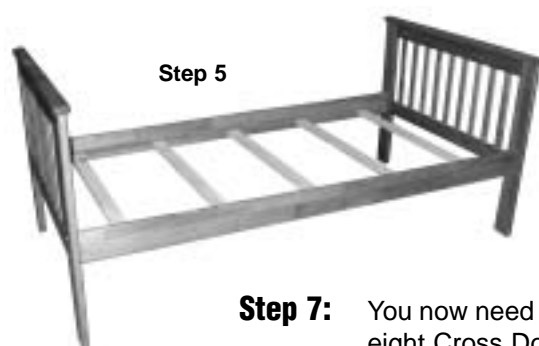
Step 2: Remove the two upper frames (narrow frames) from the upper frame box.

Step 3: To assemble the upper unit you will need the following hardware: eight 80mm Bolts, eight Cross Dowels and the 4mm Allen wrench.

Step 4: Lay the bed rails on a carpeted area with the finished face against the carpet. The eight holes you see facing up (on the ends of the bed rails) are where you now need to insert the eight Cross Dowels. The Cross Dowels must be inserted with the slotted side facing outward (this slot will be needed for adjustment). To assemble the upper unit you must use the correct bed rail in the correct location. The bed rail with (four) holes is the front. The bed rail with (six) holes is the back.



Step 4



Step 5

Step 5: Line up the holes in the upper frame posts with the holes in the bed rails and insert the bolts. (You may need to adjust the cross dowel with a flathead screwdriver before the bolt will start). Tighten using the 4mm Allen Wrench. Make sure that the notches on the bed rail cleat is facing upward. (See Step 11 photo)

Step 6: To attach the other bed rail repeat Step 5.

Step 7: You now need to assemble the lower unit. You will need the other bed rails, eight 80mm Bolts, eight Cross Dowels and the 4mm Allen Wrench.

Step 8: Lay the other (two) bed rails on a carpeted area with the finished face against the carpet. The (eight) holes you see facing up (on the ends of the bed rails) are where you now need to insert the (eight) Cross Dowels. The Cross Dowels must be inserted with the slotted side facing outward (this slot will be needed for adjustment).

Step 9: Line up the holes in the lower frame posts with the holes in the bed rails and insert the bolts. (You may need to adjust the Cross Dowels with a flat head screwdriver before the bolt will start). Tighten using the 4mm Allen Wrench. Make sure that the notches on the bed rail cleat is facing upward.

Step 10: Repeat Step 9 to attach other bed rail.

Step 11: To attach the bed slats to the bed rails you will need (five) Long Slats, (five) Short Slats and (twenty) 1" Long Screws. Lay the slats in the notches in the bed rails and screw in place using the supplied screws.

Step 12: Next you will need to stack the two units using the (four) Stacking Pins. Insert the Stacking Pins in the holes in the top caps (these holes must be directly across from each other. If they are not in line, you must un-bolt one lower frame from the bed rails and turn it around).

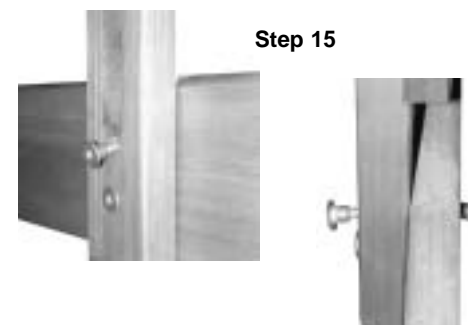


Step 11

Step 13: You will need help to stack the upper unit on top of the lower unit. Make sure that the Stacking Pins all slide inside the holes in the bottom of the upper unit.

Step 14: You must now attach the guard rails to the upper unit using the Long guard Rail, the Short Guard Rail, ten Joint Connector Nuts, the 4mm Allen Wrench and the 5mm Allen Wrench.

*Note: The front side of the upper unit is where you must mount the Short Guard Rail. (If the holes in the bed rail do not line up with the holes in the guard rail, the rails are mounted on the wrong side. To fix this problem you can lift the upper unit off of the stacking pins and turn it around facing in the opposite direction. You can now slide the upper unit down on the stacking pins).



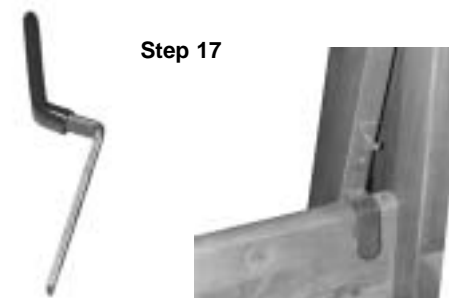
Step 15

Step 15: You may need help for this step! Line up the holes in the guard rail with the holes in the bed rail and insert the Joint Connector bolts through the outside of the guard rail and into the bed rail. Insert the Joint Connector Nuts through the holes on the inside of the bed rail and tighten using the 4mm and 5mm Allen Wrenches. Repeat this step until all (ten) Joint Connector Bolts and Nuts are tightened and both guard rails are mounted.

Step 16: You now need to attach the ladder to the front of the bunk bed. For this step you will need (two) Upper Ladder Hooks, (two) Lower Ladder Brackets, (eight) 1 1/4" Long Screws and a Phillips Head Screwdriver (not included). Mount the (two) Upper Ladder Hooks using (four) Screws as shown in the photo.



Step 16



Step 17

Step 17: Hang the Ladder in the desired location (as shown in the photo). You will need to attach the (two) Lower Ladder Brackets (see photo) using (four) 1 1/4" Long Screws. Simply slide the bracket in place and screw down using a Phillips Head Screwdriver.

ASSEMBLY INSTRUCTIONS TWIN BED AND FULL BED FROM BUNK BED

Step 1: Remove ladder.

Step 2: Remove guard rails.

Step 3: Unstack units to make (two) beds.

ASSEMBLY INSTRUCTIONS TWIN BED AND FULL BED FROM SCRATCH

Step 1: Follow Steps 1 through 11 of the Bunk Bed Assembly Instructions.