

FOR FUTURE USE AND REFERENCE
RETAIN THIS INSTRUCTION SHEET AND THE CRIB TOOLS IN THE ORIGINAL SACK
AND SECURE IT TO THE SPRING UNDER THE MATTRESS WITH PLASTIC TIES.

CARE INSTRUCTIONS: The natural warmth of wood is a lasting value. Character marks, checking and grain variations are part of the beauty of wood and, therefore, should not be a concern. To preserve your furniture, we suggest the following:

- Do not expose furniture to direct sunlight or extreme changes in temperature or moisture.
- Do not place the furniture near heating or air conditioning vents.
- Lift objects rather than dragging them across the top surface when moving them.
- Avoid contact with rubber feet materials (such as computer, desk lamp, radio) on your furniture. Certain plastics may damage the finish.
- Use a protective pad when using your furniture as a writing surface.
- Wipe up spills promptly.
- When cleaning your furniture, use non-toxic, non-abrasive furniture cleaner with soft, lint-free cloth. Dry thoroughly and then apply furniture polish. Always wipe the furniture in the direction of the wood grain.

We recommend the furniture to be polished every six months. Over polishing can distort the natural finish of the product.

- ⚠ WARNING!** Infants can suffocate on **SOFT BEDDING!** Never add a pillow, comforters or padding!
- ✓ To reduce the risk of sids, pediatricians recommend healthy infants be placed on their backs to sleep, unless otherwise advised by your physician.
 - ✓ To help prevent strangulation tighten all fasteners. A child can trap parts of the body or clothing on loose fasteners.

- ⚠ WARNING!** To insure your child's safety and for your own peace of mind, be sure to follow instructions properly. Failure to follow these warnings and assembly instructions could result in serious injury or death. Before each usage or assembly, inspect the crib for damaged hardware, loose joints, missing

parts or sharp edges.

- ✓ DO NOT use the crib if any parts are missing or broken.
- ✓ DO NOT substitute parts. Visit Parts Request at www.babysdream.com for replacement parts and instructional literature if needed.
- ✓ Make sure that all bolts and screws are properly tightened. DO NOT over- or under-tighten.
- ✓ AVOID STRANGULATION: As soon as an infant can sit or stand up, close the crib gate or raise the Drop Side permanently.
- ✓ DO NOT place the crib near a window where cords from blinds or drapes may strangle a child.
- ✓ DO NOT tie pacifiers, necklaces or any other items around a child's neck or on the crib parts.

- ⚠ WARNING!** Strings can cause strangulation! Do not place items with string around a child's neck, such as hood strings or pacifier cords. Do not suspend strings over a crib or attach string toys.

- ✓ NEVER use plastic shopping bags or other film as mattress covers, because they can cause suffocation.
- ✓ DO NOT leave a child in a crib with an open gate or lowered Drop Side. Be sure the gate is closed or the Drop Side is raised and locked in position whenever the child is in the crib. After closing the gate or raising the Drop Side, make sure the latches are secure.
- ✓ The child must be seated at the rear of the crib when lowering or raising the gate or Drop Side.
- ✓ For a newborn, adjust the spring on the highest level of the Height Adjuster and open the gate or lower the Drop Side for easy access.
- ✓ As your child grows, adjust the height of the spring down so that he/she cannot pull himself/herself out of the crib. When the child is able to pull to a standing position, set the mattress to the lowest position and remove bumper pads, large toys and other objects that could serve as steps for climbing out. When the child is able to climb out or reaches the height of 35" (90cm), the bed should no longer be used in the form of a crib.
- ✓ The time that you convert will depend on each child's individual comfort level, maturity, and size. In most instances, with proper adult supervision: Crib 0-2 years of age or when child is 35" or more in height, Youth Bed 2-5 years of age, Adult Bed 6 years and older.

ANY MATTRESS USED IN THIS CRIB MUST BE AT LEAST 27¹/₄" X 51⁵/₈" WITH A THICKNESS NOT EXCEEDING 6". DO NOT USE A WATER MATTRESS WITH THIS CRIB.

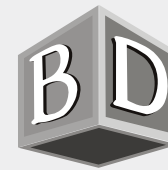
This product may be covered by one or more of the following patents:
D366,778; D366,970,5,077,846
 and other patents pending.



This crib conforms to the applicable regulations promulgated by the Consumer Product Safety Commission, as well as safety certifications by JPMA.

BABY'S DREAM™
FURNITURE, INC.

Buena Vista, GA 31803-0579
www.babysdream.com



Convertible "Ocean" Stationary Crib (Twin-Size) Instruction Sheet

Read All Instructions Before Assembling Crib. Keep Instructions For Future Use.

PARTS LIST

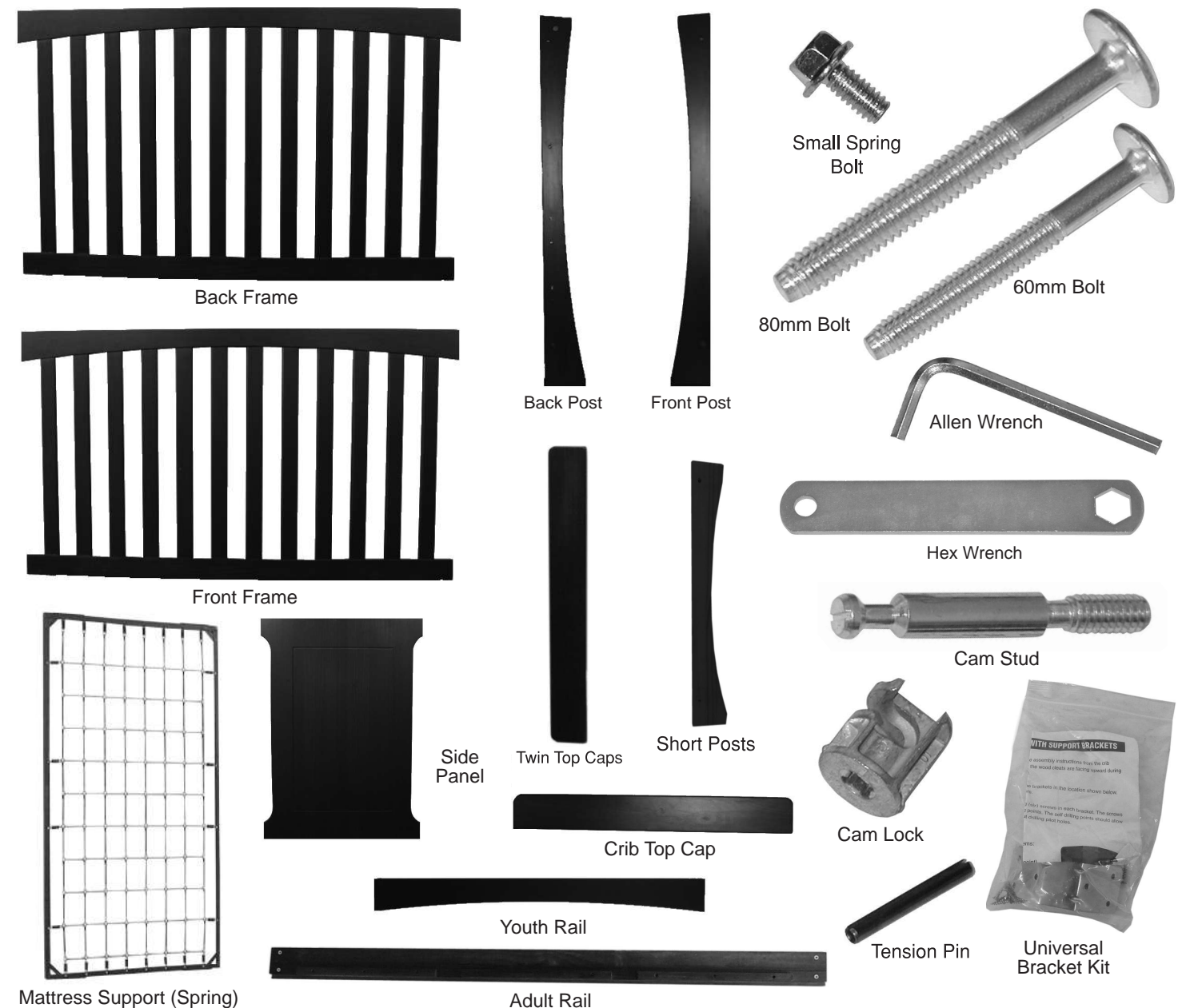
- (1) Back Frame
- (1) Front Frame
- (2) Side Panel
- (2) Back Post
- (1) Youth Brace
- (2) Top Caps
- (1) Mattress Support (Spring)

HARDWARE

- (8) 80mm Bolts
- (8) 60mm Bolts
- (4) Small Spring Bolts
- (4) Cam Locks
- (4) Cam Studs
- (1) Hex Wrench
- (4) Tension Pins

ITEMS INCLUDED WITH THE TWIN CONVERSION KIT (sold separately)

- (2) Short Posts
- (2) Twin Top Caps
- (2) Adult Rails
- (1) Support Bracket Kit
- (8) Cam Locks
- (8) Cam Stud Bolts
- (1) Allen Wrench



DO NOT substitute parts. Contact 1-800-TEL-CRIB for replacement parts and instructional literature if needed.

CRIB ASSEMBLY INSTRUCTIONS

To begin you will need to lay all four posts on the carpeted floor. You will notice that two of the Posts have a extra set of inserted holes on the inside of the post at the bottom. These two Posts are the Back Posts. The remaining two posts are the Front Posts.

Step 1: Position the Back Post to the Back Frame and tighten the four 80mm Bolts with the Allen Wrench. Repeat the same with the Front Posts and the Front Frame.

Step 2: To attach the two Side Panels to the Posts. You will run eight 60mm Bolts thru the holes on the posts into the threaded insert of the Side Panel. Tighten the Bolts at this time using the Allen Wrench.

Step 3: Take two of the Cam Studs and screw them into the threaded insert on the bottom of the Top Cap. You need to do this for both Top Caps.



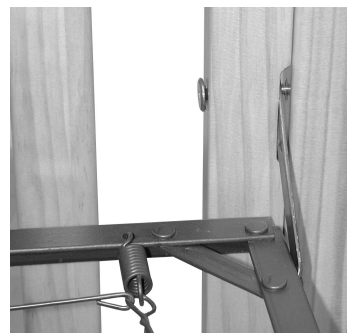
Step 3



Step 4

Step 4: Place the Top Cap with the Cam Studs facing down into the pre-drilled holes on the top of the Front and Back Posts. Take a Cam Lock, with the arrow facing the feed of the Cam Studs into the holes in the post underneath the Top Cap. Using your Allen Wrench, tighten down the Cam Lock into position.

Step 5: To attach the Mattress Support (spring), using the four small Spring Bolts and Hex Wrench. You must bring the arm out to position and feed the Spring Bolts through the holes in the arms of the spring and into the threaded metal inserts in the post on the crib. Once you have done this, tighten all four bolts with the Hex Wrench.



Once a crib has been converted to a toddler/youth bed or adult bed it is not intended to be converted back to a crib. In that instance, it will not be covered by the manufacturer's warranty.

YOUTH BED CONVERSION

Make sure the Mattress Support (Spring) is in the lowest position for this conversion.

Step 1: Remove the Front Frame from the Front Post of the crib by using the Allen Wrench to unscrew the 80mm Bolts. Make sure you leave the Front Post still attached to the Side Panels.

Step 2: Insert the two Tension Pins in the pre-drilled holes in the Youth Rail. Position the Youth Rail between the two Front Posts at the bottom. Once you have the brace in position, place the Bolts into the post and into the threaded inserts in the brace. Now tighten the two 80mm Bolts.



TWIN BED CONVERSION

Conversion from Crib using Twin Conversion Kit by Baby's Dream (sold separately).

Step 1: Remove the Mattress Support, Front Frame and Back Frame from the Crib.

Step 2: Take the two Front Posts and two Back Posts off the Side Panels.

Step 3: You will need to turn one Side Panel 90°. Attach the two Rear Posts to the Side Panel by using four 60mm Bolts and the Allen Wrench.

Step 4: You will use the two Short Posts provided in the Twin Conversion Kit and the other Side Panel to make the Footboard for the Twin Bed. Attach the two Short Posts to the Side Panel with the four 60mm Bolts and the Allen Wrench.

Step 5: Place the Twin Top Caps with the Cam Studs facing down into the pre-drilled holes on the top of the Front and Back Posts. Take a Cam Lock, with the arrow facing the feed of the Cam Stud into the holes in the Posts underneath the Top Cap. Tighten down the Cam Locks with the Allen Wrench.

Step 6: Attach the Adult Rails included in the Twin Bed Conversion Kit. You will need to screw the Cam Studs into the bottom insert in each post. Slide the rails up on the Cam Studs by inserting the Cam Studs into the holes located in the ends of the wood Adult Rails. When all of the rails are slid against the posts, you need to insert the Cam Locks into the holes on the inside of the rails. Tighten using your Allen Wrench. Make sure that the cleats on the Adult Rails are to the top side.



The Twin Bed **IS NOT** intended to be used by children under 6 years of age without proper adult supervision. This Twin Bed **IS NOT** a toy. **DO NOT** allow children to play or climb on Twin Bed.